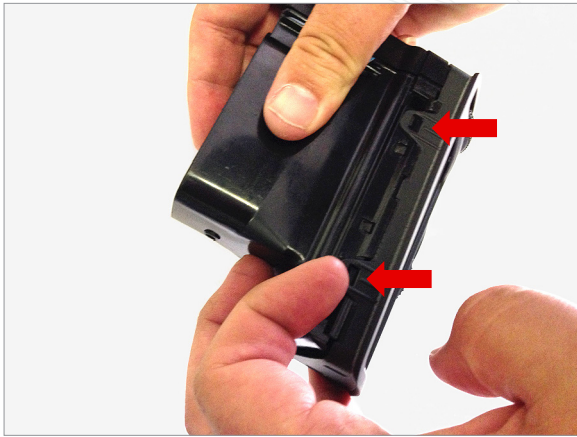




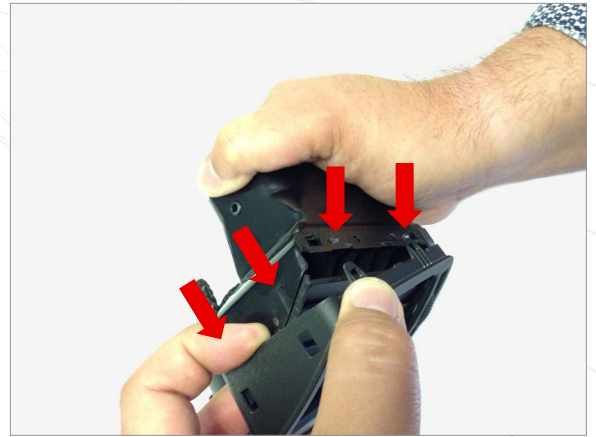
P3CARS.COM
PRECISION • PASSION • PERFORMANCE

Please download the latest copy of this document from www.p3cars.com/install

Volkswagen Golf Mk4



1 On the left of the vent housing pull facia away from clips and release top left clip.



2 Insure both left side clips are free and both top clips are free.



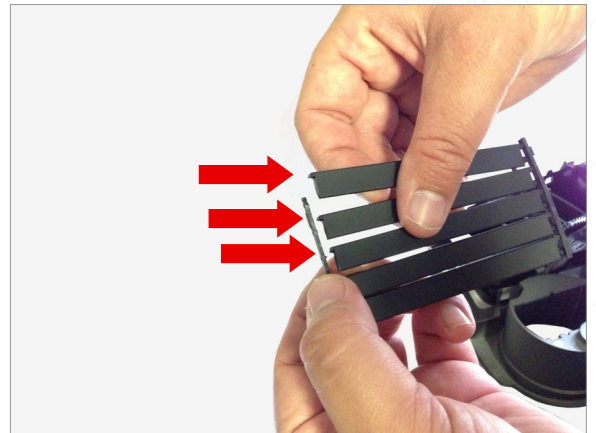
3 With a smooth thin trim tool or thin flat head screw driver release the round recessed clip on the right. Facia is now free.



4 Rotate facia trim to the rear underside of vent housing leaving vent slats exposed. PLEASE NOTE you will need to leave the RIGHT side roller , front slats and rear flap in this position for ease of reassembly



5 Starting from the LEFT side of the vent remove the vent slats



6 Gently remove the top three vent slats.

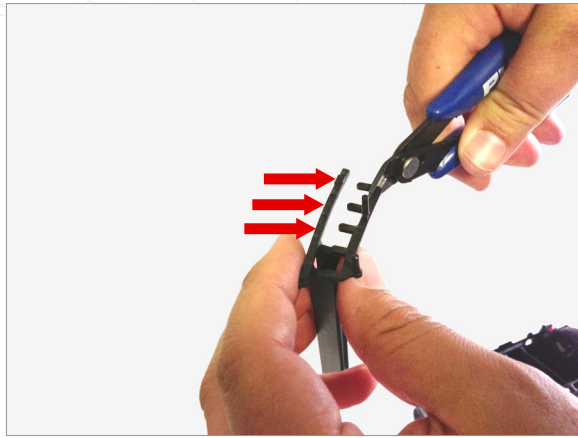
WARRANTY & LIABILITY:

Neither P3 Cars, nor its dealers or agents shall be liable in any way, for any damage, loss, injury or other claims, resulting from the installation or use of this product. By purchasing or installing this product, you assume all liability of any kind connected with the use and/or application of this product. If you are unsure that you can safely install and use this product, consult a qualified installer or mechanic. The warranty on this product covers only the product itself for a period of 6 months from the date of purchase, and it will be at our discretion to repair or replace the affected parts. No user serviceable parts inside. Warranty will be voided if product shows physical damage.



P3CARS.COM
PRECISION • PASSION • PERFORMANCE

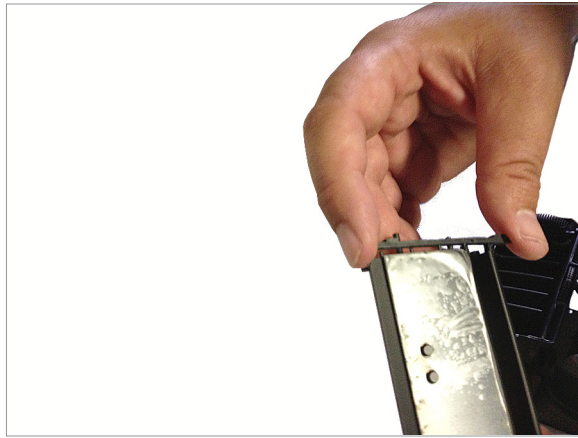
Please download the latest copy of this document from www.p3cars.com/install



7 With a sharp pair of snips clip the three protruding keepers on the keeper rail.



8 In the side vent slat retainer bars install the P3Cars gauge into the existing vent slat holes.



9 Do the same for the right side.



10 Re-attach the vent face, starting at the bottom with the 2 circular clips.



11 Insert these into the key way inside the roller from frame 10. BE sure that the rear flap is in the closed position as the vent slats and rear flap need to move in synchronicity.



12 Feed cable in left side of vent housing against bottom left side of vent interior.

WARRANTY & LIABILITY:
Neither P3 Cars, nor its dealers or agents shall be liable in any way, for any damage, loss, injury or other claims, resulting from the installation or use of this product. By purchasing or installing this product, you assume all liability of any kind connected with the use and/or application of this product. If you are unsure that you can safely install and use this product, consult a qualified installer or mechanic. The warranty on this product covers only the product itself for a period of 6 months from the date of purchase, and it will be at our discretion to repair or replace the affected parts. No user serviceable parts inside. Warranty will be voided if product shows physical damage.

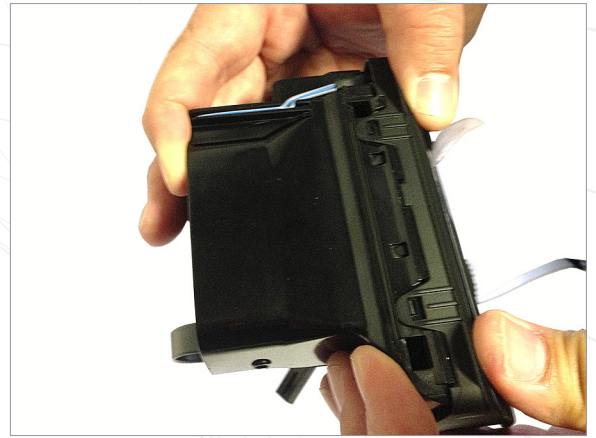


P3CARS.COM
PRECISION • PASSION • PERFORMANCE

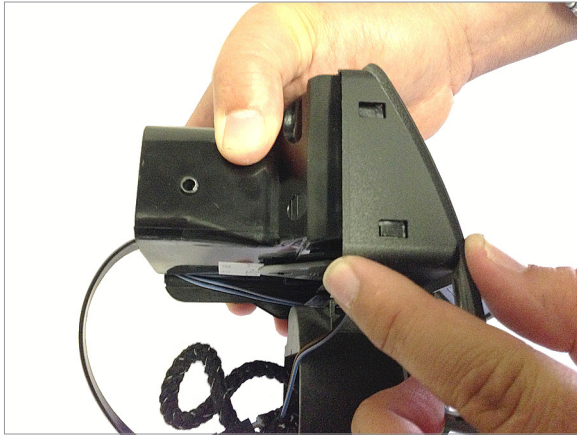
Please download the latest copy of this document from www.p3cars.com/install



13 Manually open rear flap and slide cable out bottom left then manually close flap against it.



14 Clip top clips insuring that the P3Cars display protective covering is NOT stuffed behind fascia.



15 Clip side clips.

WARRANTY & LIABILITY:

Neither P3 Cars, nor its dealers or agents shall be liable in any way, for any damage, loss, injury or other claims, resulting from the installation or use of this product. By purchasing or installing this product, you assume all liability of any kind connected with the use and/or application of this product. If you are unsure that you can safely install and use this product, consult a qualified installer or mechanic. The warranty on this product covers only the product itself for a period of 6 months from the date of purchase, and it will be at our discretion to repair or replace the affected parts. No user serviceable parts inside. Warranty will be voided if product shows physical damage.



16 Installation complete!
Please refer to the [gauge usage and configuration guide](#) for an explanation of features. If you have additional questions, email us at support@p3cars.com